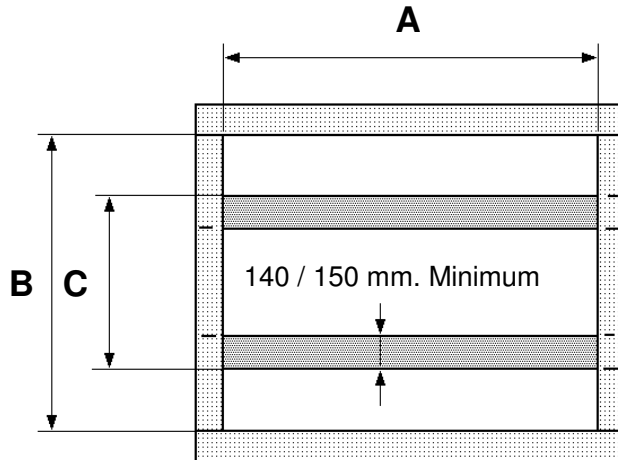




## LIFTING TABLES PIT DRAWING HEAVY SERIES LIFTING TABLES

Pit Plant



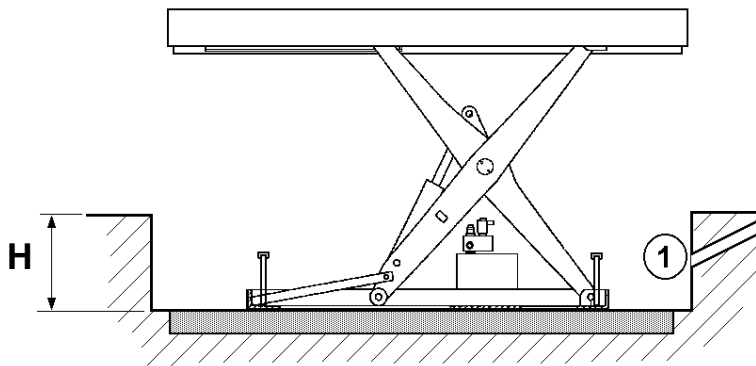
### Dimensional calculation

**A** = Lifting table length + 30 mm.

**B** = Lifting table width + 30 mm.

**C** = Lower frame width

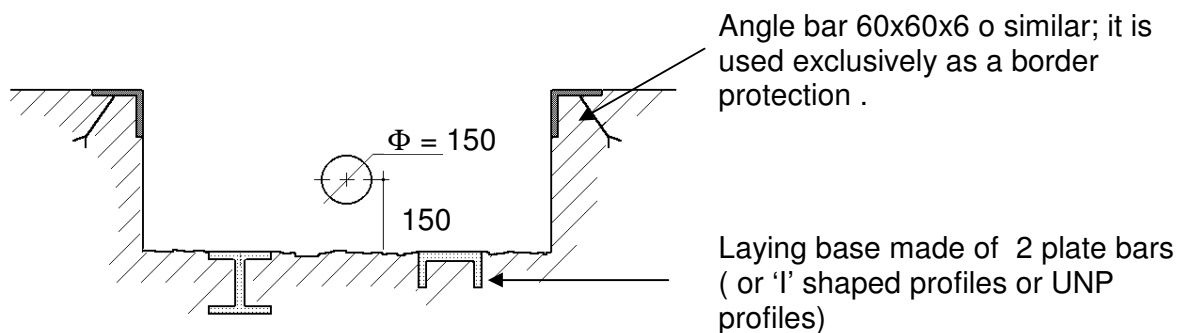
Pit lateral section



1. The pipe ( $\varnothing = 150$  mm.) for cables and flexible pipes passage is to be positioned at the center of the short side where the hydraulic powerpack lays.

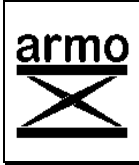
**H** = Closed table height +  
5 ÷ 10 mm.

Pit frontal section



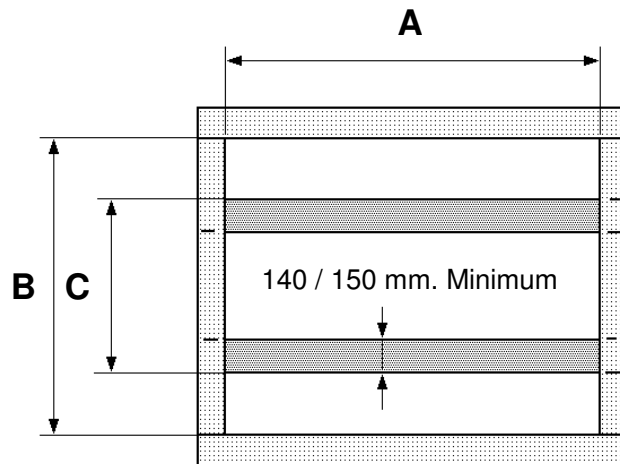
**IF NECESSARY, IT MUST BE FORESEEN SUMP FOR UNLOADING WATER**

Note: Respect the given quotes when positioning the 2 bars. No particular finishing grade is required for the inner sides and the pit base.



## LORRY LOADING LIFTING TABLES PIT DRAWING MANUAL LIP ON SHORT SIDE

**Pit plan**



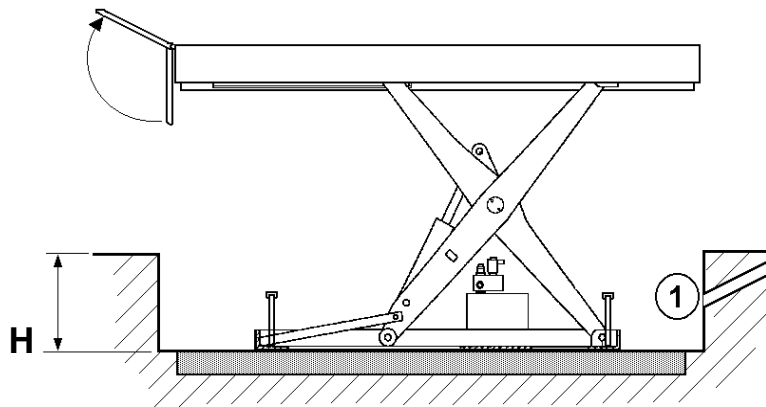
### Dimensional calculation

**A** = Lifting table length + 60 mm.

**B** = Lifting table width + 30 mm.

**C** = Lower frame width

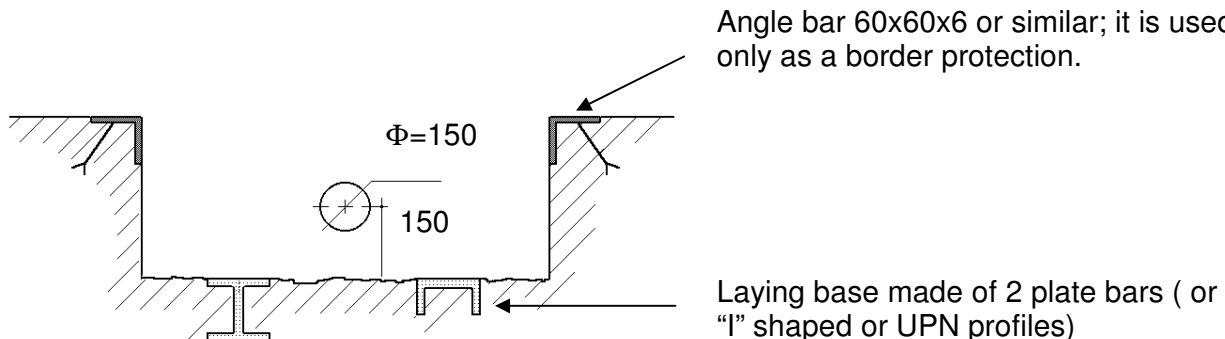
**Pit lateral section**



1. The pipe ( $\varnothing = 150$  mm.) for cables and flexible tubes passage must be positioned at the centre of the short side where the hydraulic power pack lays.

**H** = Closed table height  
+ 5 ÷ 10 mm.

**Pit frontal section**



Angle bar 60x60x6 or similar; it is used only as a border protection.

Laying base made of 2 plate bars ( or "I" shaped or UPN profiles)

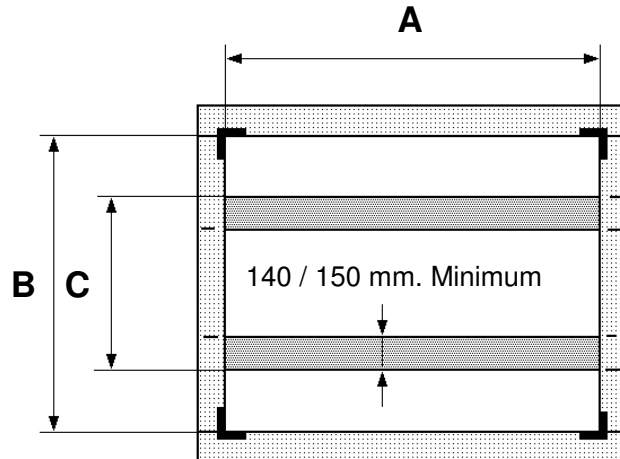
**If necessary, foresee a well for possible release of rain.**

Note: Respect the given quotes when positioning the 2 bars. No particular finishing grade is required for the inner sides and the pit base



## PIT DRAWING FOR LIFTING TABLES FOR CONNECTING 2 FLOORS

Pit plant



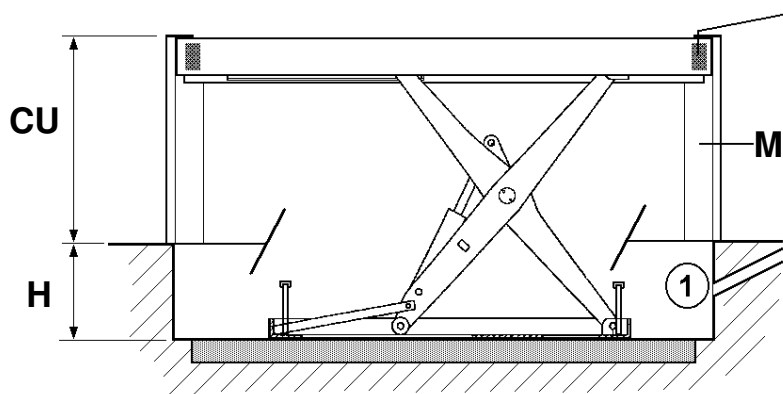
### Dimensional calculations

**A** = Lifting table length + 40 mm.

**B** = Lifting table width + 40 mm.

**C** = Lower frame width

Pit lateral section



**P** = Lifting skids on 4 corners

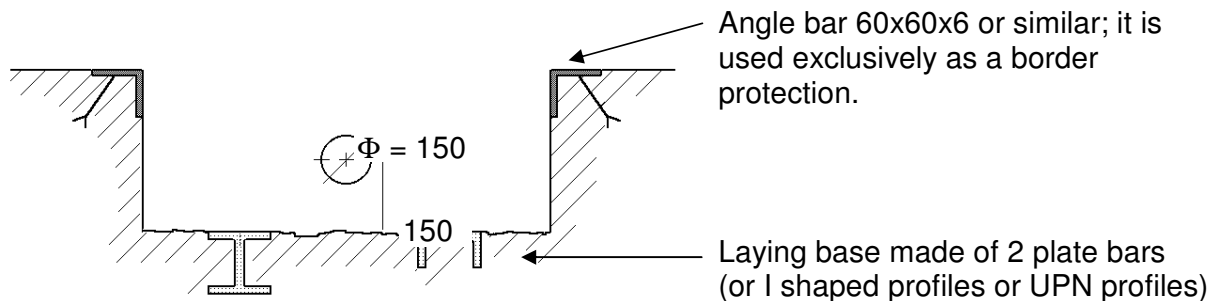
**1.** The pipe ( $\varnothing = 150$  mm.) for cables and flexible pipes passing has to be placed in the middle of the short side where the hydraulic power-pack lays.

**H** = Lifting table closed height +  
5 ÷ 10 mm.

**CU** = Lifting table lifting height.

**M** = N.4 lifting guide bars made by  
angle 80x80x8

Pit frontal section



**If necessary, foresee pit for possible release of rain.**

Note: Respect the given quotes when positioning the 2 bars. No particular finishing grade is required for the inner sides and the pit base.